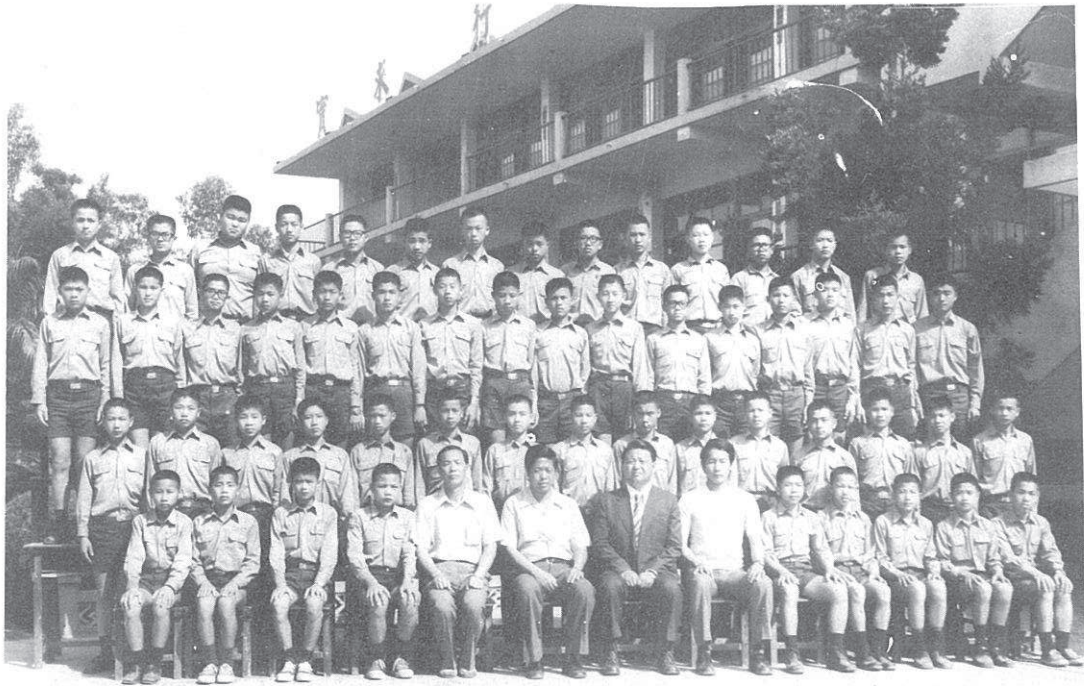
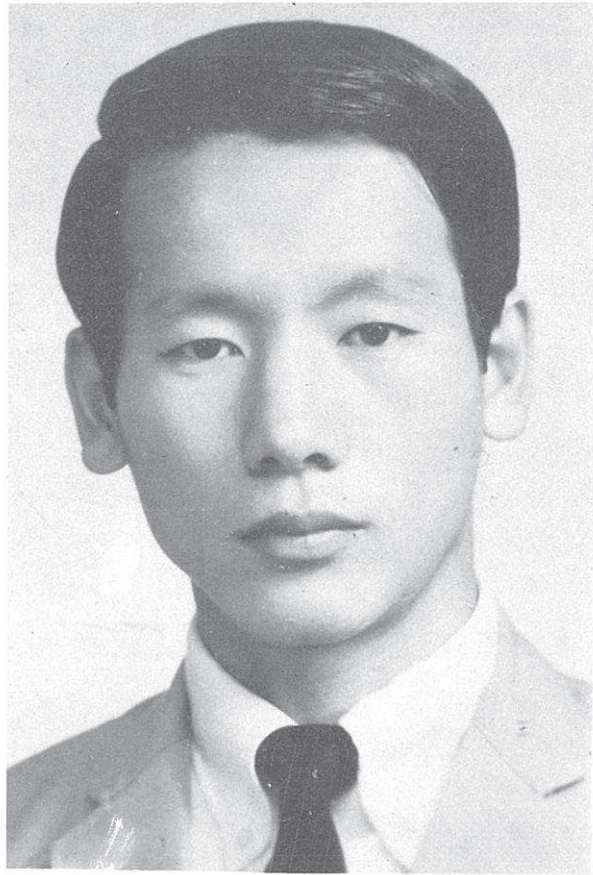




丁里義題

鐵之成鋼是冶煉而成
玉之成器是琢磨而成



影合生師班二十二年三

前程似錦

班22年三



華國曾



卿錫王



仁景賴



銘志張



潭慶蔡



茂隆林



滄文林



湖百張



輝永仇



卿閔蕭



朝瑞洪



信玉聶



順永黃



榮朝陳



森文陳



興忠張



興協張



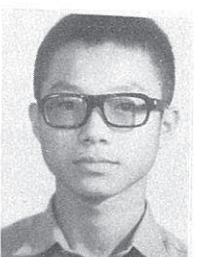
卿文張



裕寬傅



洲榮陳



宗順王



忠福陳



賢有盧



林樹陳



輝庭王



威振王



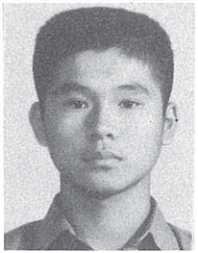
堃傳劉



忠惠曹



源順陳



原敏黃



程威廖



鋒振楊



釗敦王



誠武蔡



榮森謝



慶國顧



惠文吳



志明林



成旺林



中振鄭



圖鴻劉



諭盟邱



綜信陳



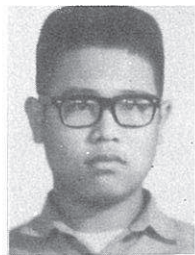
軒秋王



明志吳



芳明張



中錫黃



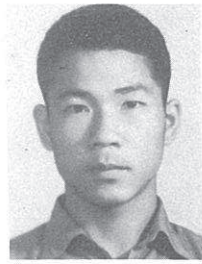
浩永牛



福連李



銘漢劉



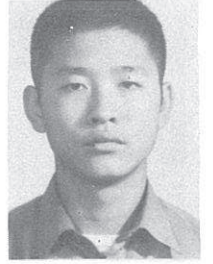
欽漢劉



禮明王



輝明游



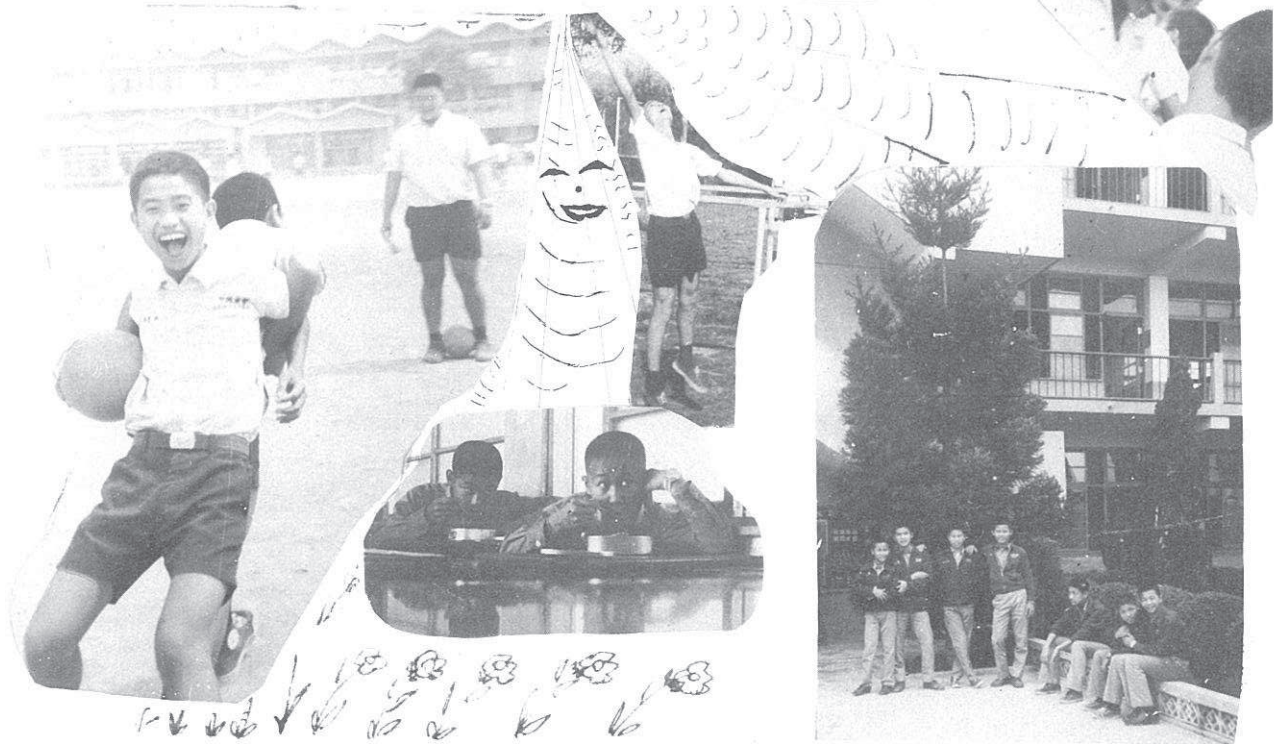
福財陳



嗨！向『誰』招呼呢



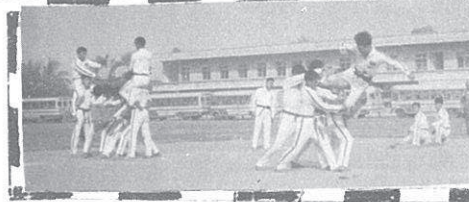
存實陳



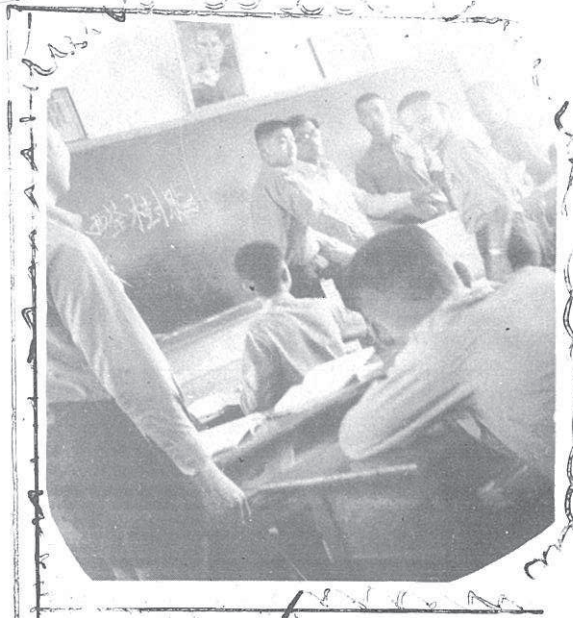
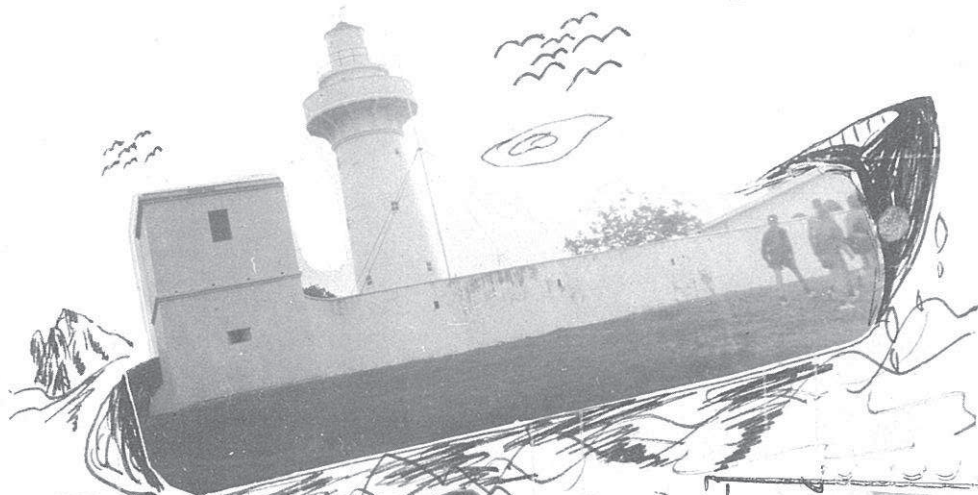


走！看表演去

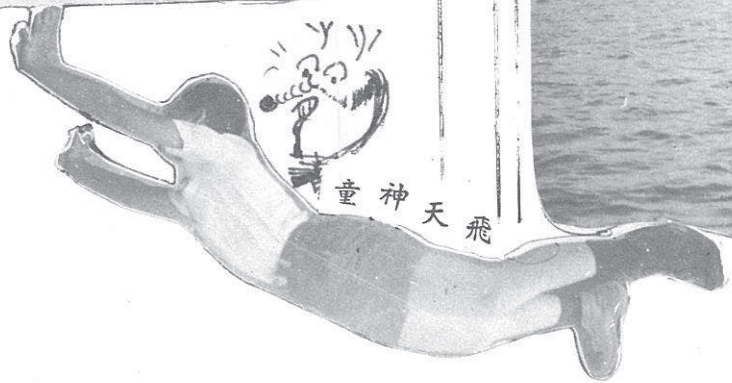
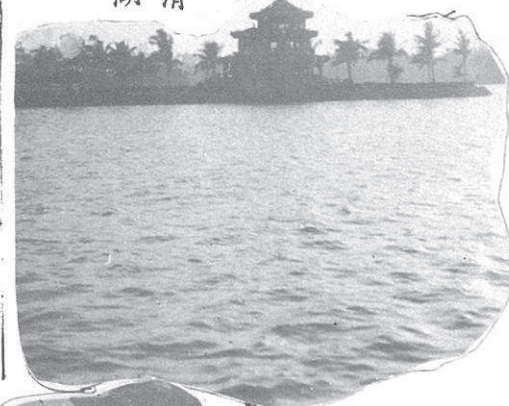
我們永遠跟隨偉大的領袖



嬉於荒勤於精業



難忘的澄清湖



飛天神童